

## Creating NGN Question Types in Canvas

New Quizzes is a new assessment engine in Canvas. In addition to the existing question types (e.g. matching, multiple choice, essay, etc.), New Quizzes also includes categorization, fill in multiple blanks, multiple dropdown, stimulus/passage, ordering, and hotspot question types.

In Canvas Assignments, there is also a Student Annotation assignment type that can be used to help students develop competence in clinical judgment.

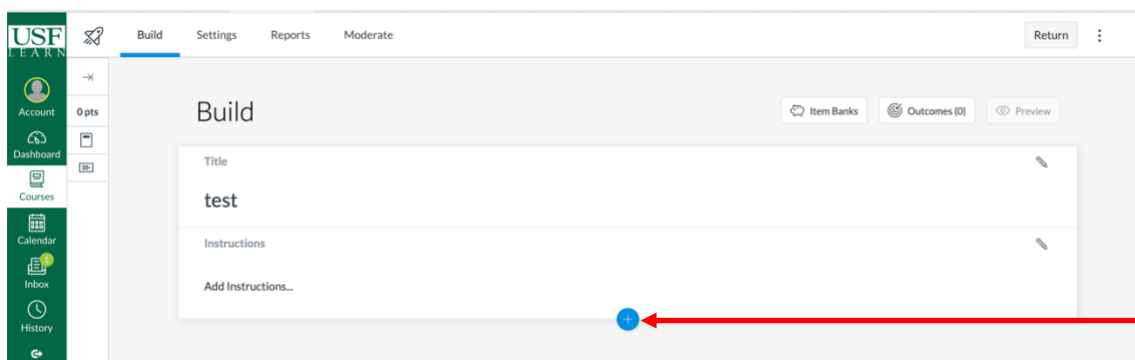
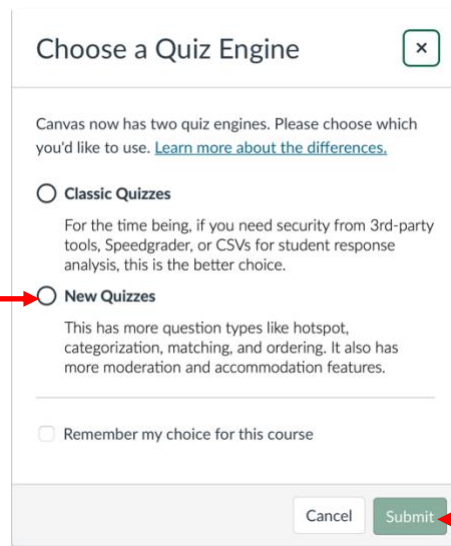
This handout provides instructions on how to create question types similar to the new NGN item types.

### New Quizzes in Canvas

1. Access your Canvas course.
2. Click **Quizzes**.
3. Click the **+Quiz** button to create a new quiz.
4. Click **New Quizzes** in the *Choose a Quiz Engine* pop-up window.
5. Click **Submit**.
6. Follow the onscreen prompt to enter the quiz details.
7. Click **Build**.

**Note:** You will be redirected to the Build screen. In the Build screen, you can modify your exam title and instructions and add your questions.

8. To add questions, click the plus sign.



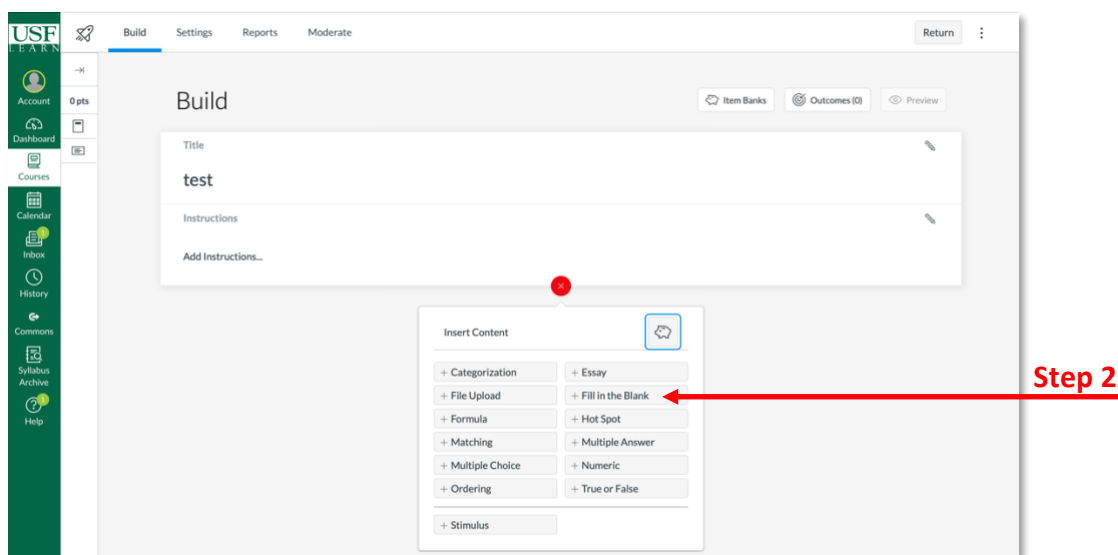
## Drag and Drop Cloze Questions

For drag and drop cloze questions, you would normally use *Fill in the Blank* type questions and select *Word Bank*. However, there are some known issues with *Word Bank* answers that won't allow the question to function properly. In the interim, use the *Fill in the Blank* type questions and select *Dropdown* (see the instructions in the next section).

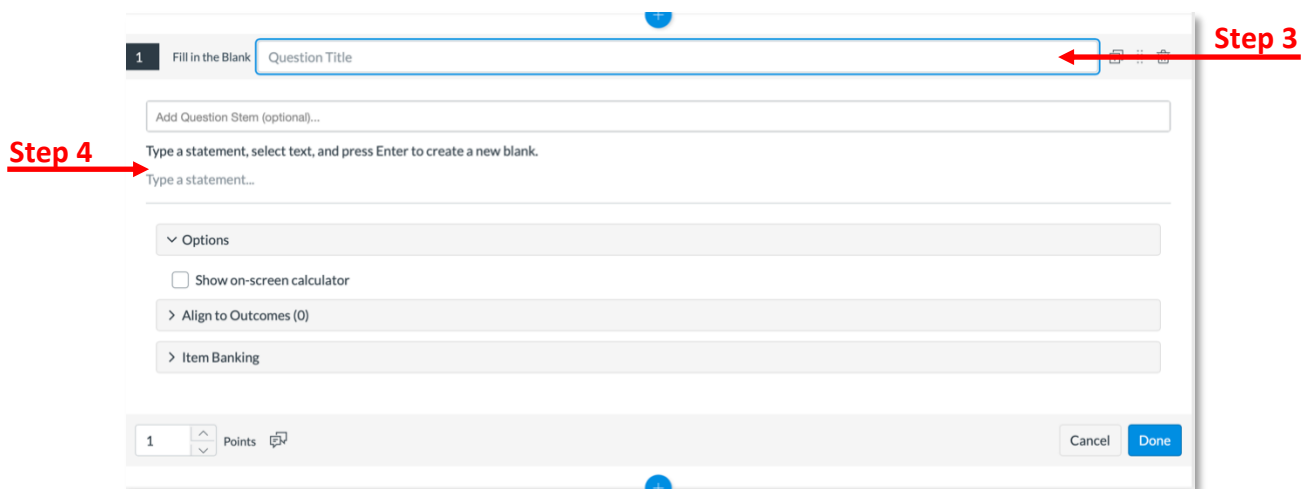
## Dropdown Cloze Questions

After you have created a quiz following the steps in the New Quizzes in Canvas section, you are ready to add dropdown cloze type questions to your quiz.

1. Verify you have clicked the plus sign from the Build screen to add a question to the quiz.
2. Click **+Fill in the Blank**.



3. In the *Question Title* field, type the title/subject of the question.
4. In the *Statement* field, type the statement (i.e. question). Include the word(s) that will be in the dropdown menu.



- To create the dropdown, place a back quote ( ` ) before and after the answer. The back quote key is to the left of the #1 key on your keyboard. Repeat this step to include multiple dropdown fields. In the example below, the back quotes are in red.

**Example:** Fruits are `watermelon`, `kiwi`, and `apple`.

**Note:** When you place the back quote around the answer, it will appear in the box below. This indicates this answer will be in a dropdown menu.

- Change the *Answer Type* for each answer to **Dropdown**.
- Place distractors for each answer (there must be at least one distractor) or delete the distractor if you do not want one.
- Verify the other settings align with your expectations.
- Click **Done**.

The screenshot shows a quiz editor interface. At the top, there's a question stem: "Type a statement and surround a word with backticks to indicate where a student will fill in the answer. (e.g., 'Roses are `red`, violets are `blue`')". Below this, the question text is "Fruits are `watermelon`, `kiwi`, and `apple`." Two answer entries are shown. The first is for "watermelon" and the second is for "kiwi". Both have their "Answer Type" set to "Dropdown". For the "watermelon" entry, there are two possible choices: "watermelon" (selected) and "squash". For the "kiwi" entry, there are three possible choices: "kiwi" (selected), "asparagus", and "peas". Red arrows labeled "Step 5" point to the question text. Red arrows labeled "Step 6" point to the "Answer Type" dropdown for both answers. Red arrows labeled "Step 7" point to the trash icons for the distractors "squash" and "peas".

## Dropdown Table Questions

To add a dropdown table question to your quiz, you will follow the same steps in the *Dropdown Cloze Question* section. The only thing different you need to do is add a table as part of the question stem. When you insert the table as part of the stem, you will have your answers with the back quote symbol.

In the images below, the standard part of the question are the states. The participants will choose the correct answer for each category. With nursing content, the first column could be medication names and the other columns could be drug classification and directions to the patient (take with food, take with no food, etc.).

3 1 point

Select the correct answer from each area on the table.

States	Popular Food	Nickname
Florida	choose your answer... ▾	choose your answer... ▾
Idaho	choose your answer... ▾	choose your answer... ▾
Maine	choose your answer... ▾	choose your answer... ▾

3 1 point

Select the correct answer from each area on the table.

States	Popular Food	Nickname
Florida	key lime ▾	The Sunshine State ▾
Idaho	potato ▾	Gem State ▾
Maine	lobster ▾	choose your answer... ▴

choose your answer...  
Beaver State  
The Pine Tree State

Submit

1. Verify you have clicked the plus sign from the Build screen to add a question to the quiz.
2. Click **+Fill in the Blank**.
3. In the *Question Title* field, type the title/subject of the question.
4. In the *Statement* field, type the statement (i.e. question).
5. Press the Enter/Return key on your keyboard.
6. Click the table icon.
7. Click **Table**.

Type a statement and surround a word with backticks to indicate where a student will fill in the answer. (e.g., "Roses are `red`, violets are `blue`")

Select the correct answer for each part of the question.

Step 7

8. Select the number of columns and rows you will need for your question.
9. Enter the header for each of the columns.
10. Navigate to the first column and enter the text in each row.
11. To create the dropdown for the second and third columns, place a back quote ( ` ) before and after the answer. The back quote key is to the left of the #1 key on your keyboard. Repeat this step to include multiple dropdown fields.

Type a statement and surround a word with backticks to indicate where a student will fill in the answer. (e.g., "Roses are `red`, violets are `blue`")

Item	iPhone	Android
Apple makes this phone.	`yes`	`no`
Google Play is where you download apps.	`no`	`yes`

12. Change the *Answer Type* for each answer to **Dropdown**.
13. Place distractors for each answer (there must be at least one distractor) or delete the distractor if you do not want one.
14. Verify the other settings align with your expectations.
15. Click **Done**.

## Matrix Multiple Choice

To add a matrix multiple choice question to your quiz, you will follow the same steps in the *Dropdown Cloze Question* section. The only thing different you need to do is add a table as part of the question stem. When you insert the table as part of the stem, you will have your answers with the back quote symbol.

In the images below, the standard part of the question is the statement on the left. The participants will choose the correct answer for each item. There is a column for each device. With nursing content, the first column could be conditions and the other columns for risk or no risk. Or you could list symptoms in the first column and causes in the other columns.

Item	iPhone	Android
Apple makes this phone.	choose your answer... ▾	choose your answer... ▾
Google Play is where you download apps.	choose your answer... ▾	choose your answer... ▾

Item	iPhone	Android
Apple makes this phone.	choose your answer... ▾ no yes	choose your answer... ▾
Google Play is where you download apps.	choose your answer... ▾	choose your answer... ▾

Submit

## Highlighting (Hot Spot) Questions

There are two ways to create highlighting (hot spot) type questions within Canvas. In addition to creating highlighting (hot spot) questions within New Quizzes, you can use Assignments as well. These instructions will provide guidance for creating both.

### Highlighting (Hot Spot) Questions Using Quizzes

After you have created a quiz following the steps in the New Quizzes in Canvas section, you are ready to add highlighting (hot spot) type questions to your quiz

**Important:** It is important to know that highlighting (hot spot) questions are not accessible to users requiring keyboard-only access or screen readers.

1. Verify you have clicked the plus sign from the Build screen to add a question to the quiz.
2. Click **+Hot Spot**.
3. In the *Question Title* field, type the title/subject of the question.
4. In the *Question Stem* field, type the question.
5. Add the image that will contain the highlighting (hotspot) by dragging and dropping it or browsing and searching for it.
6. Once you have uploaded the image, use the hot spot shapes to identify the content that should be clicked/highlighted.
7. Verify the other settings align with your expectations.
8. Click **Done**.

### Highlighting (Hot Spot) Questions Using Assignments

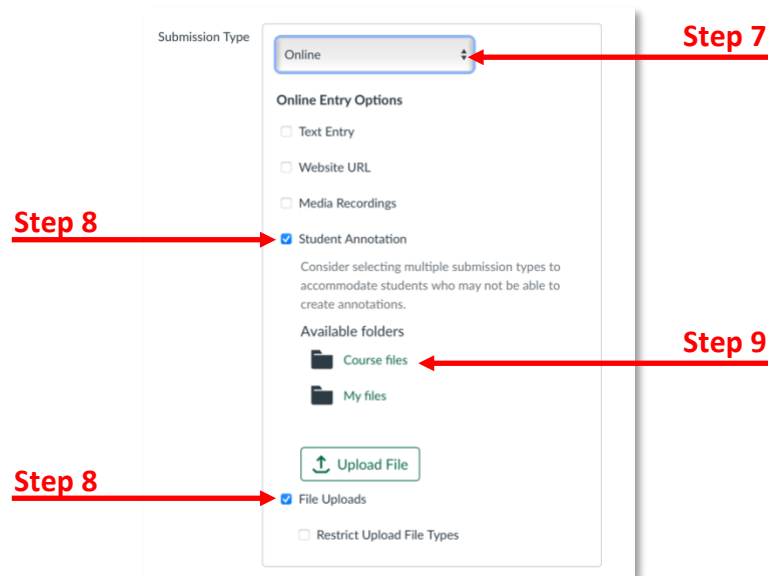
Within Assignments, you can use the Student Annotation to create hot spot like questions. You can upload a file for students to annotate. Students will access the assignment file (e.g. document or image) provided by the instructor and can use the Canvas annotation tools to markup the file (highlight, add comments, etc.). The students can then submit the annotated file in Canvas as their assignment. All of this occurs directly in Canvas.

1. Access your Canvas course.
2. Upload the file the students will annotate to the *Files* area in the course.
3. Click **Assignments**.
4. Click the **+Assignments** button to create a new assignment.
5. Follow the onscreen prompt to enter the assignment details.
6. Click the *Submission Type* down arrow.
7. Select **Online**.
8. Click **Student Annotation** and **File Uploads**.

**Note:** Currently, the annotation tool cannot be used for group assignments and does not work in mobile browsers. Students must use a desktop browser or the Canvas app for the iPad for the annotation tool to work. Therefore, Canvas recommends selecting an additional submission type (e.g. text entry, file upload, etc.) just in case some students cannot use the annotation tool.

9. Click **Course Files** and follow the onscreen prompts to locate and attach the file. The file would appear under the description for Student Annotation.

**Note:** If you did not upload the file in step 2, you will have to click **Upload File** and search for the file from your computer.



10. Click **Save**.

**Next Steps:** The students will access the assignment and complete it following your instructions. They can highlight and add comments.

## Drop Down Table Item (aka Extended Drag and Drop) Questions

After you have created a quiz following the steps in the New Quizzes in Canvas section, you are ready to add extended drag and drop type questions to your quiz.

1. Verify you have clicked the plus sign from the Build screen to add a question to the quiz.
2. Click **+Categorization**.
3. In the *Question Title* field, type the title/subject of the question.
4. In the *Question Stem* field, type the question.
5. Under *Categorization 1*, type the first category.
6. Under *Categorization 2*, type the second category. If you need another category, click **+Category**.
7. In the *Answer* field, type the answers for each category. If you need another answer for a category, click **+Answer**.
8. If you want to add distractors, click **+Distractor** and add the distractors.
9. Click **Done**.

## Extended Multiple Response Questions

After you have created a quiz following the steps in the New Quizzes in Canvas section, you are ready to add extended multiple response type questions to your quiz.

1. Verify you have clicked the plus sign from the Build screen to add a question to the quiz.
2. Click **+Multiple Answer**.
3. In the *Question Title* field, type the title/subject of the question.
4. In the *Question Stem* field, type the question.
10. In the *Answer* fields, type the answers. If you need another answer for a category, click **+Answer**.
5. Click the checkbox next to all of the correct answers.
6. For Grading, select **Partial credit with penalty**.

**Note:** You are selecting this option to mimic the NCLEX exam.

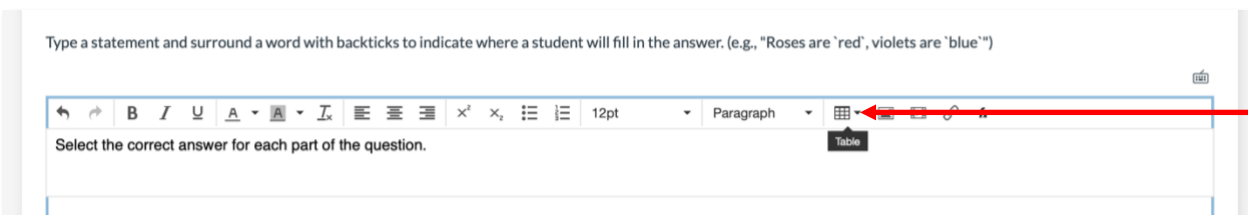
7. Click **Done**.

## Bowtie Questions

After you have created a quiz following the steps in the New Quizzes in Canvas section, you are ready to add bowtie type questions to your quiz.

To add a bowtie type question, you will have to create an invisible table within the Rich Content Editor in Canvas.

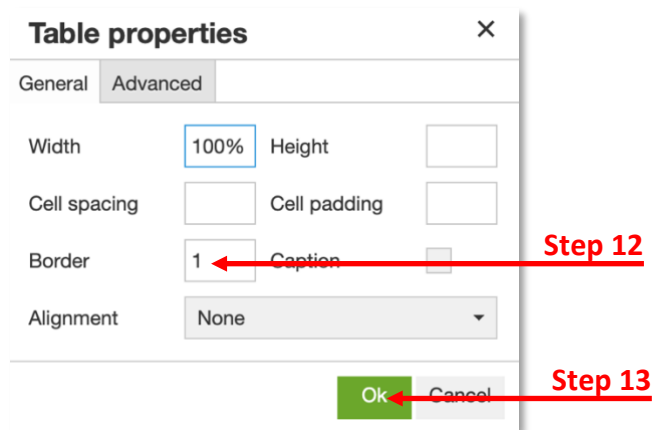
1. Verify you have clicked the plus sign from the Build screen to add a question to the quiz.
2. Click **+Fill in the Blank**.
3. In the *Question Title* field, type the title/subject of the question.
4. In the *Statement* field, type the statement (i.e. question). Include the word(s) that will be in the blank (or dragged to the blank).
5. Press the Enter/Return key on your keyboard.
6. Click the table icon.
7. Click **Table**.



8. Select the number of columns and rows you will need for your question.
9. Make sure your cursor is in the table.
10. Click the down arrow next to the table icon.
11. Click Table properties.
12. **Delete 1** from the *Border* field. The field should be empty.
13. Click **Ok**.



**Note:** These prior three steps will create the invisible table for you and allow your question to appear as a bowtie question.



14. Enter the header for each of the columns.
15. Navigate to the first column and enter the text in each row.
16. To create the dropdown for the second and third columns, place a back quote ( ` ) before and after the answer. The back quote key is to the left of the #1 key on your keyboard. Repeat this step to include multiple dropdown fields.

Type a statement and surround a word with backticks to indicate where a student will fill in the answer. (e.g., "Roses are `red`, violets are `blue`")

The image shows a quiz editor interface with a table. The table has two rows and three columns. The first row has headers: 'Item', 'iPhone', and 'Android'. The second row has: 'Apple makes this phone.', 'yes', and 'no'. The third row has: 'Google Play is where you download apps.', 'no', and 'yes'. Red boxes highlight the 'yes' and 'no' answers in the second and third rows.

17. Change the *Answer Type* for each answer to **Dropdown**.
18. Place distractors for each answer (there must be at least one distractor) or delete the distractor if you do not want one.
19. Verify the other settings align with your expectations.
20. Click **Done**.

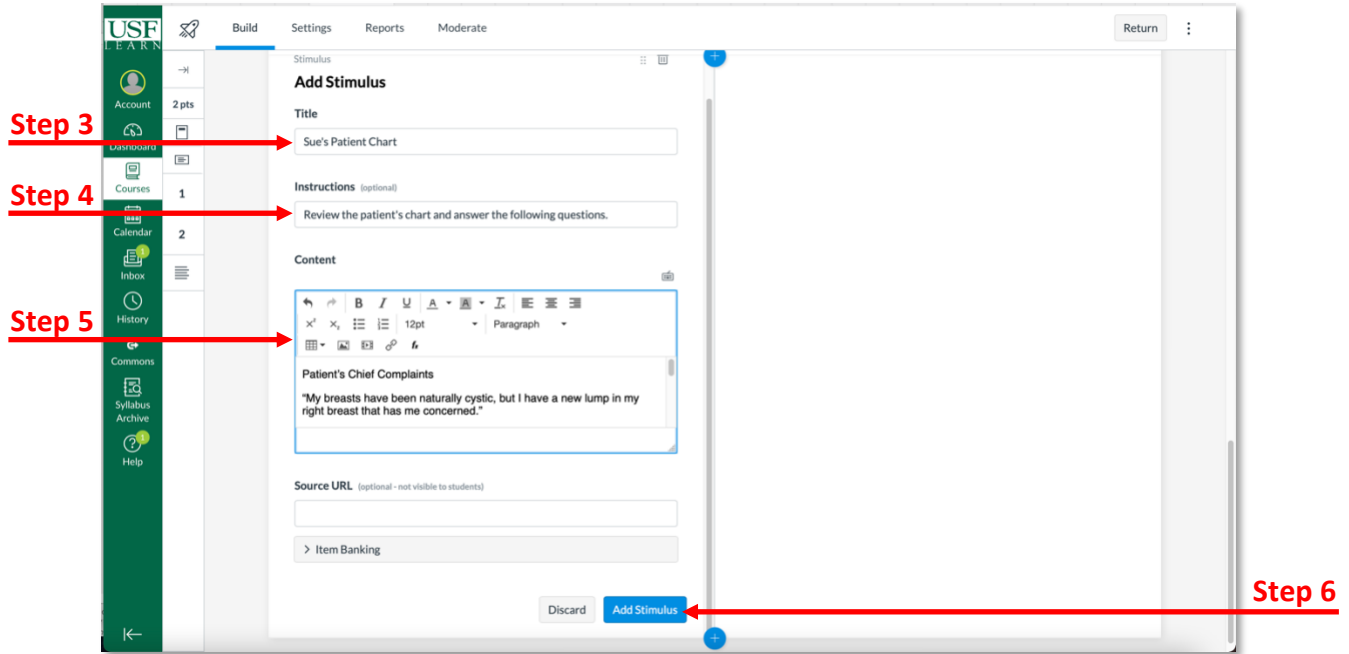
## Stimulus Questions

After you have created a quiz following the steps in the New Quizzes in Canvas section, you are ready to add stimulus type questions to your quiz.

Stimulus questions allows you to provide students with information (i.e. case study, patient's chart, etc.) and then ask questions about that stimulus.

1. Verify you have clicked the plus sign from the Build screen to add a question to the quiz.
2. Click **+Stimulus**.
3. In the *Title* field, type the title/subject of the question.

4. In the *Instructions* field, type the instructions for the question.
5. In the *Content* field, type the content/stimulus (i.e. case study, patient's chart, etc.).



6. Click **Add Stimulus**.
7. On the right side, click **Attach Question**.
8. Choose the question type and follow the onscreen prompts.

**Note:** Continue to click **Attach Question** to add additional questions for that stimulus.

